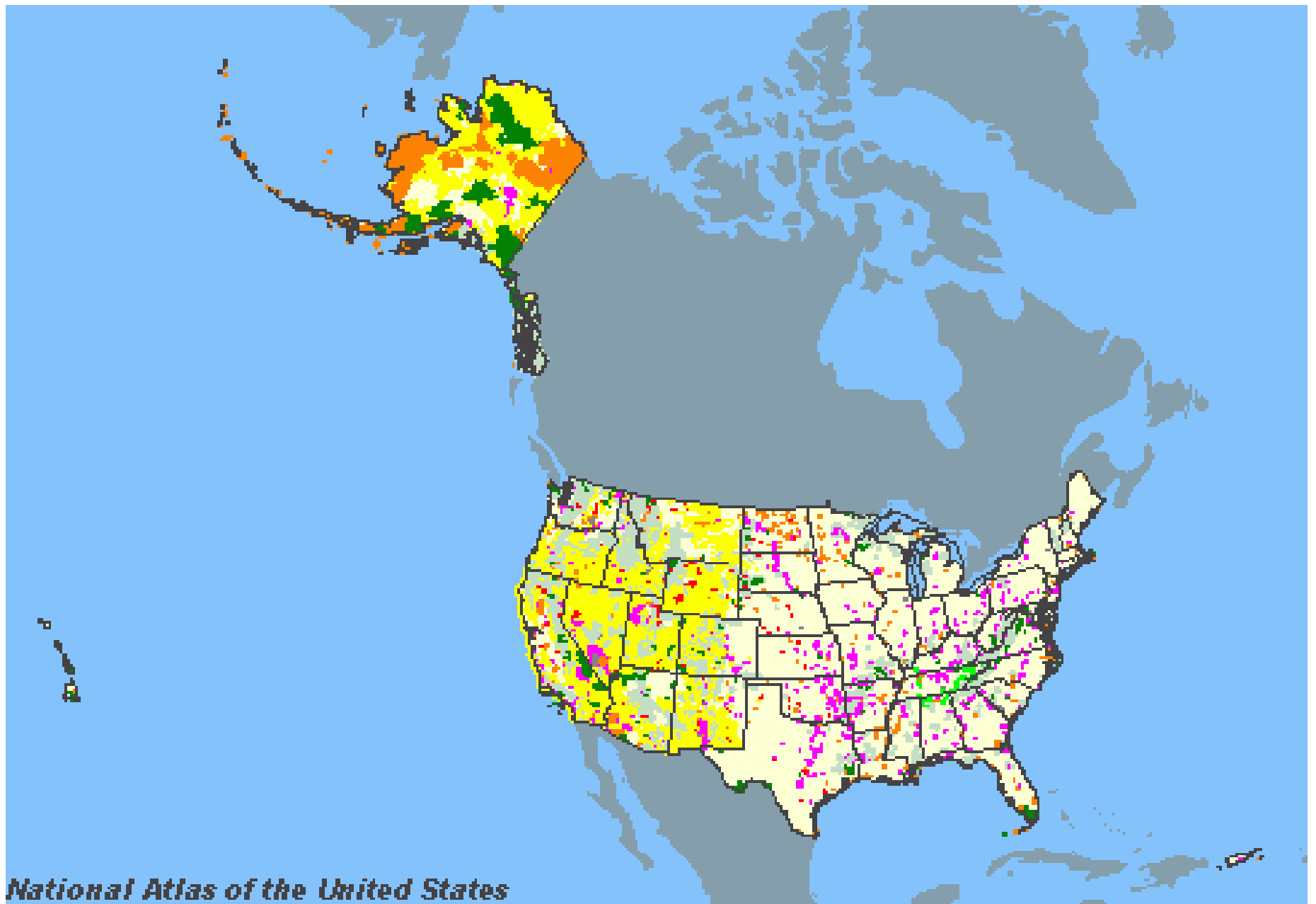


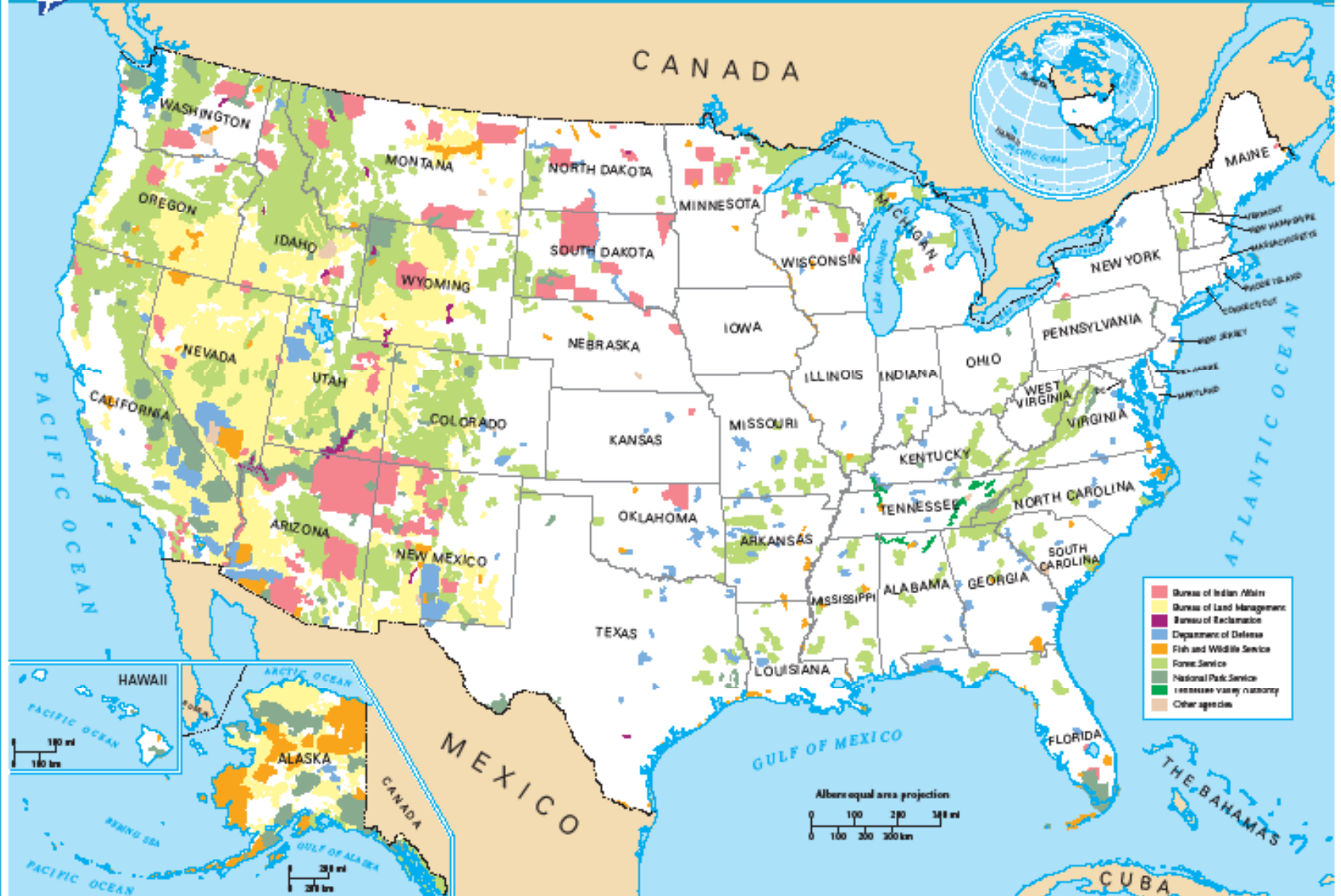
# Federal Archeology Program and Archaeoinformatics

Archaeoinformatics.org

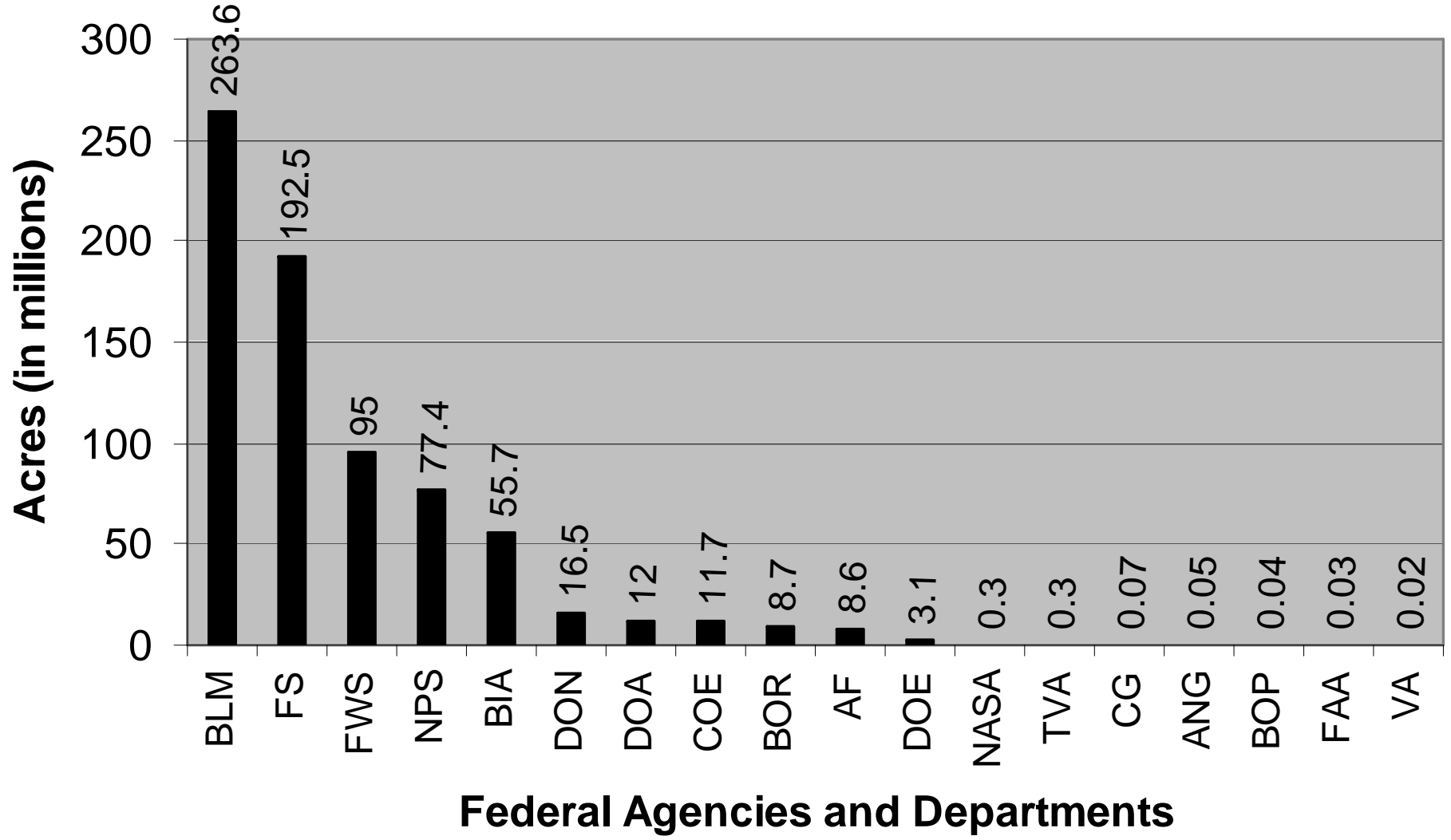
15-17 February 2008



*National Atlas of the United States*



<b>Agency Acronym</b>	<b>Agency Name</b> [Large Land-Managing Agencies Highlighted; > 1 million acres]
<b>AF</b>	Air Force (Department of Defense)
<b>ANG</b>	Air National Guard (Department of Defense)
<b>BIA</b>	Bureau of Indian Affairs (Department of the Interior)
<b>BLM</b>	Bureau of Land Management (Department of the Interior)
<b>BOP/DOJ</b>	Bureau of Prisons (Department of Justice)
<b>BOR</b>	Bureau of Reclamation (Department of the Interior)
<b>CG</b>	Coast Guard (Department of Homeland Security)
<b>COE</b>	Army Corps of Engineers (Department of Defense)
<b>DOA</b>	Department of the Army (Department of Defense)
<b>DOE</b>	Department of Energy
<b>FAA</b>	Federal Aviation Administration (Department of Transportation)
<b>FS</b>	Forest Service (Department of Agriculture)
<b>FWS</b>	Fish and Wildlife Service (Department of the Interior)
<b>INS *</b>	Citizen and Immigration Services; (formerly Immigration and Naturalization Services ) (Department of Homeland Security)
<b>NASA</b>	National Aeronautics and Space Administration
<b>NOAA</b>	National Oceanic and Atmospheric Administration (Department of Commerce)
<b>NPS</b>	National Park Service (Department of the Interior)
<b>TVA</b>	Tennessee Valley Authority
<b>USGS</b>	U.S. Geological Survey (Department of the Interior)
<b>USN</b>	U.S. Navy and Marine Corps (Department of Defense)
<b>USPS</b>	U.S. Postal Service
<b>VA</b>	Veterans Administration



**Overview, Planning, Field Studies, and Excavations carried out by Land-Managing Federal agencies FY 1998-2003**

<b>Year</b>	<b>Overviews and File Checks</b>	<b>Field Studies</b>	<b>Field Studies / Overviews</b>	<b>Data Recovery Projects</b>	<b>Acres Surveyed</b>
<b>1998</b>	35428	18100	51%	962	2386033
<b>1999</b>	26126	13201	51%	499	2096304
<b>2000</b>	36317	15159	42%	522	2494195
<b>2001</b>	24398	15136	62%	574	2112214
<b>2002</b>	42805	19679	46%	753	2441760
<b>2003</b>	47984	23103	48%	617	3441565
<b>Totals</b>	213,058	104,378	50%	3,927	14,972,070

**Overview, Planning, Field Studies, and Excavations carried out by Development and Regulatory Federal agencies, FY1998-2003**

<b>Year</b>	<b>Overviews and File Checks</b>	<b>Field Studies</b>	<b>Field Studies / Overviews</b>	<b>Data Recovery Projects</b>	<b>Acres Surveyed</b>
<b>1998</b>	6173	1494	24%	24	1032531
<b>1999</b>	5211	1119	21%	32	403445
<b>2000</b>	32758	25472	78%	16	1797305
<b>2001</b>	41368	28634	69%	64	4176381
<b>2002</b>	47449	30569	64%	55	1264997
<b>2003</b>	41388	21077	51%	35	2440025
<b>Totals</b>	174,346	108,365	62%	226	11,114,684

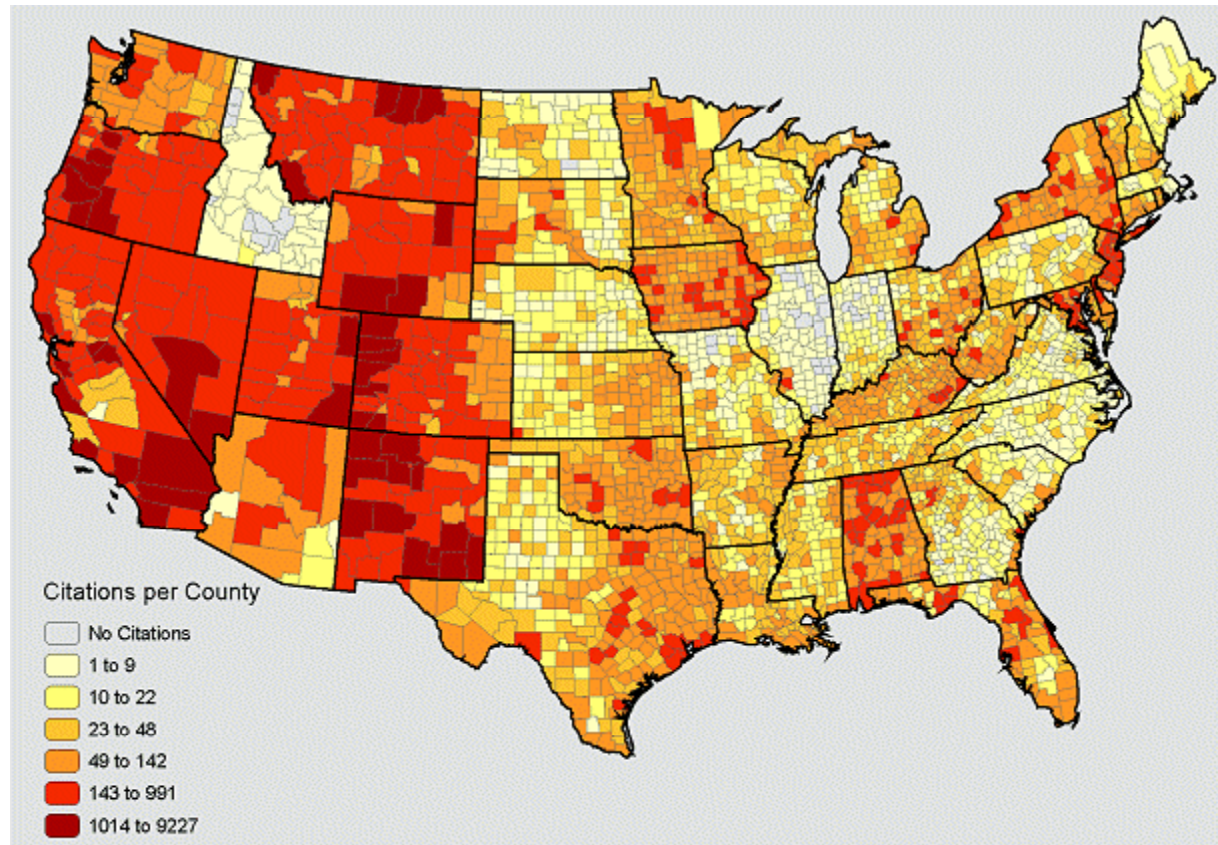
# NADB-Reports

NATIONAL ARCHEOLOGICAL DATABASE

Publication Year	Number of Reports in NADB-Reports
1988	11,783
1989	12,852
1990	14,457
1991	12,969
1992	13,365
1993	11,909
1994	10,954
1995	10,899
1996	11,442
1997	8,085
1998	7,120
1999	6,470
2000	8,030
2001	7,154
2002	4,120
2003	87

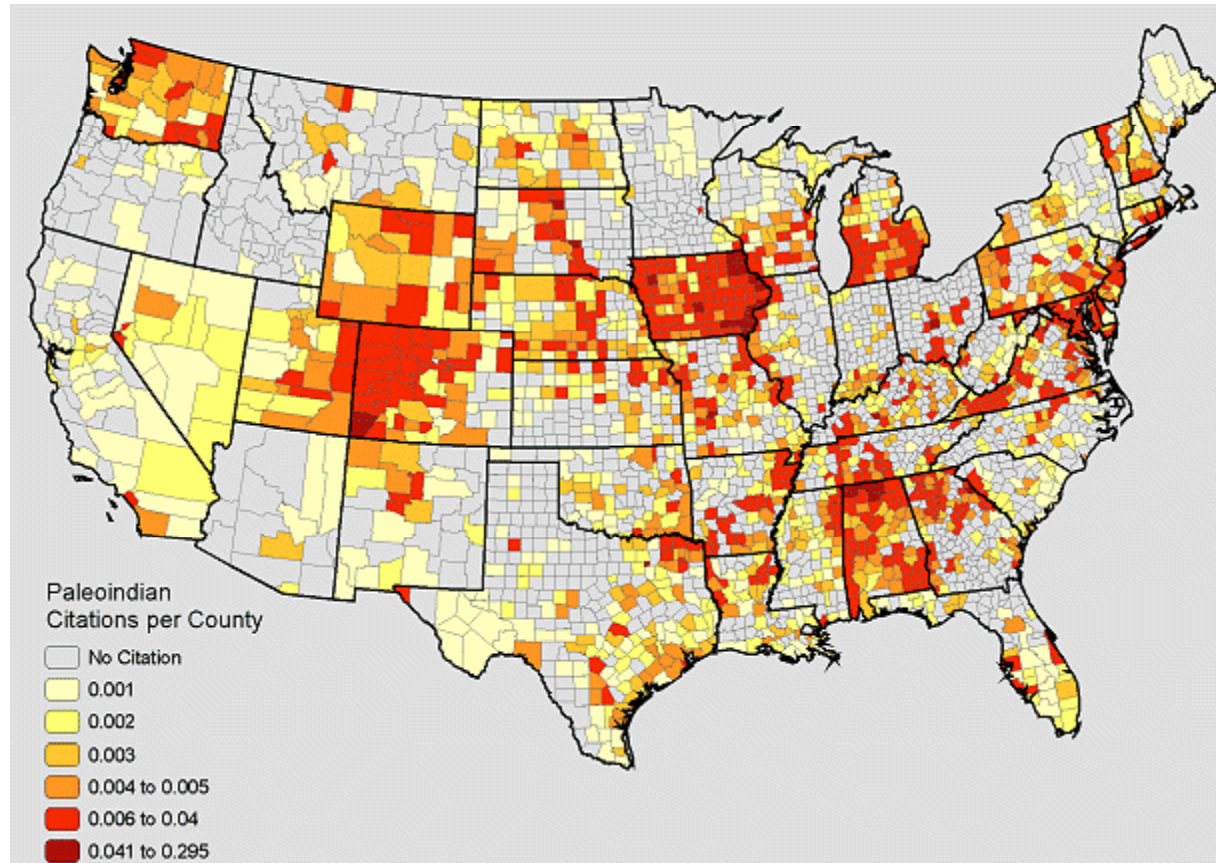
# NADB-Reports

NATIONAL ARCHEOLOGICAL DATABASE



# NADB-Reports

NATIONAL ARCHEOLOGICAL DATABASE



# Value to Federal Agencies

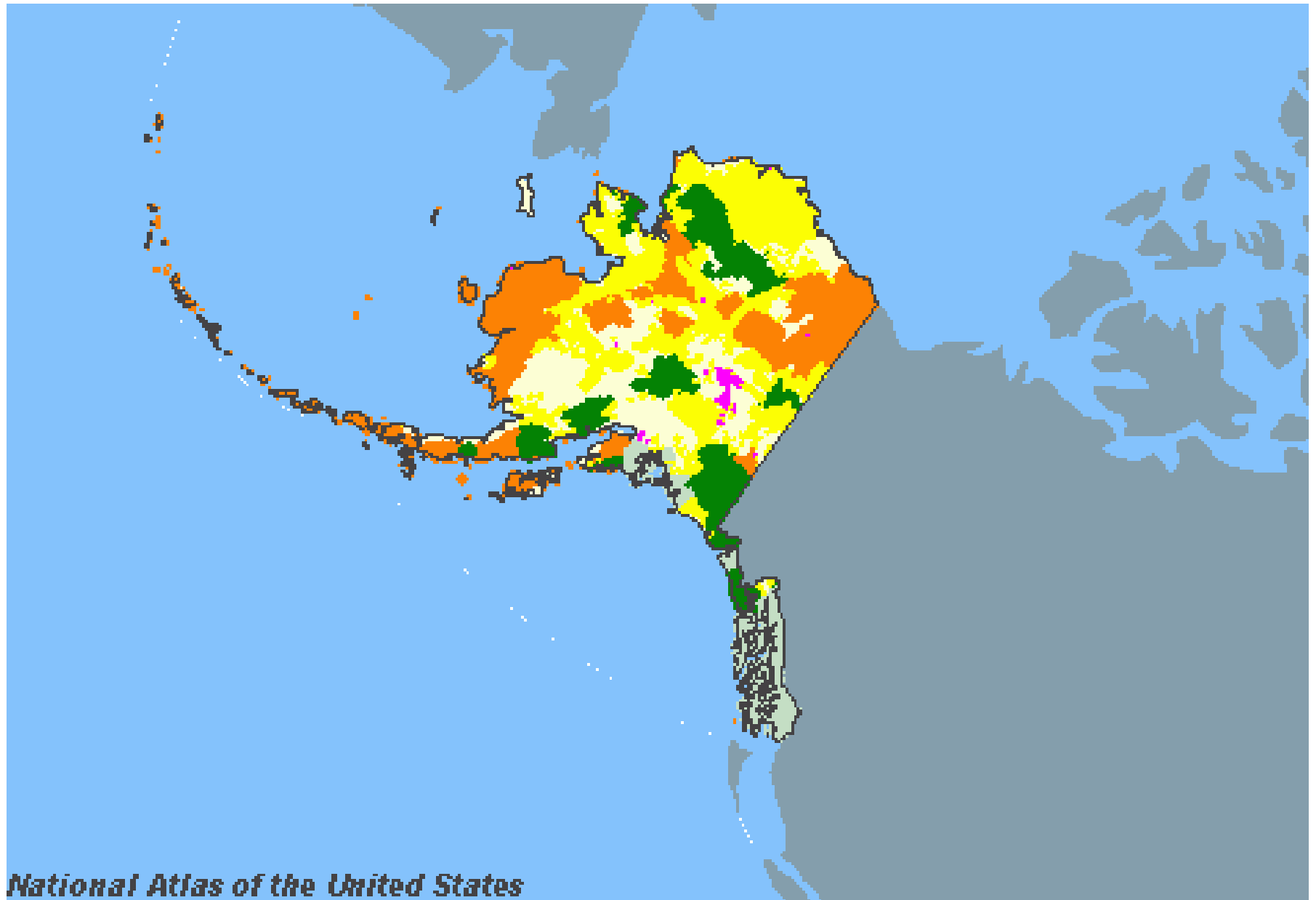
- Searchable archive of documents, data, and images would provide means for agencies to demonstrate they are meeting accountability and management responsibilities.
- Research for resource evaluation, interpretation, protection, and preservation would be easier.
- Preparing SOW for archeological studies needed would be easier.

# Current Cultural Resource Digitalization Efforts in NPS

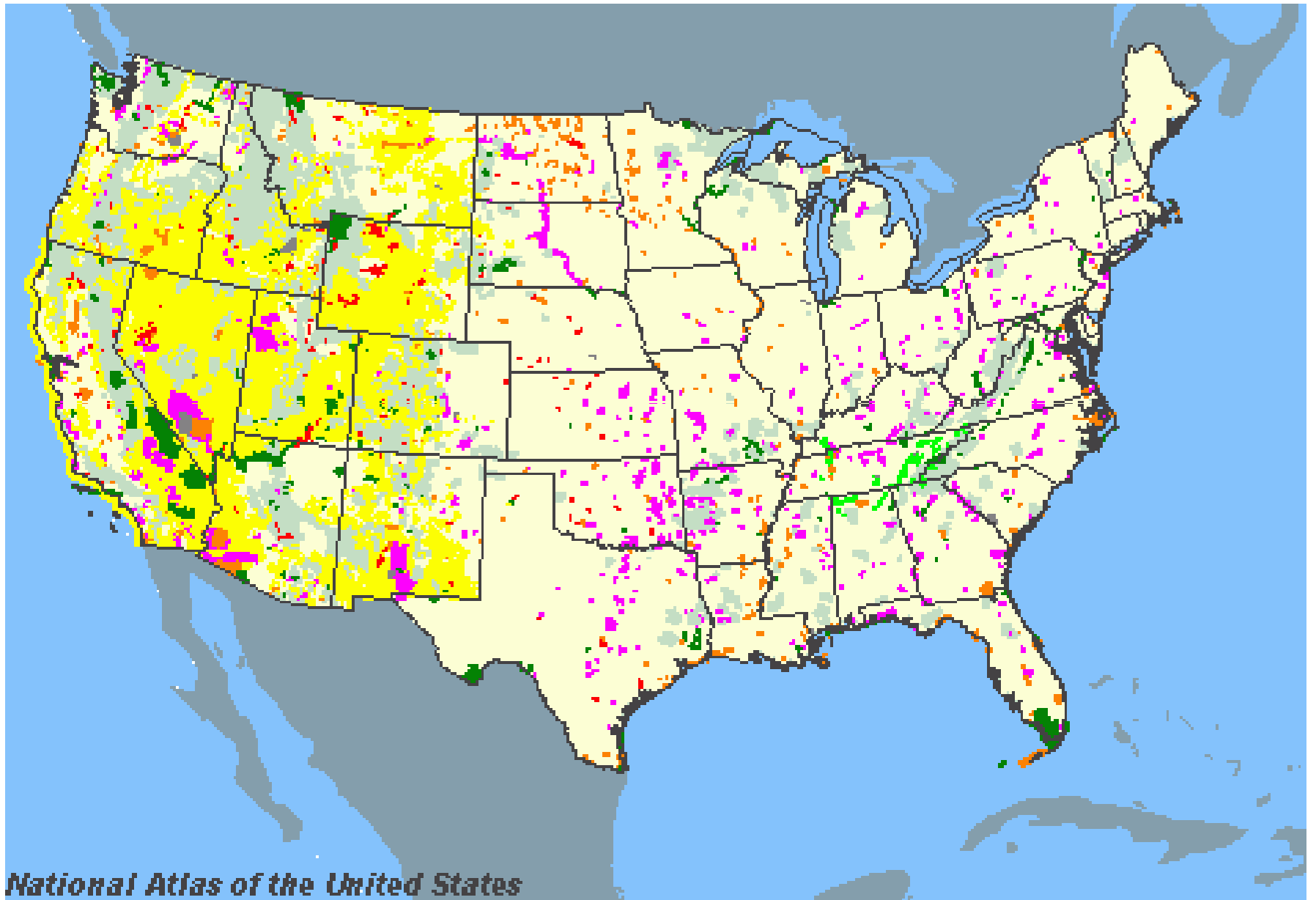
- National Register of Historic Places forms on the web.
- National Historic Landmarks forms on the web.
- Plans for National Historic Properties Inventory linking all SHPO offices and inventories. [Preserve America symposium-2006 outcome]

# Challenges to Federal Archeology Archaeoinformatics

- Organizing and funding digitization of legacy documents, data, and images.
- Creating “industry standards and procedures to ensure new projects include document, data, and image digitization, preservation, and access
- Legal protections of information about archeological resources.
- Recent and expectable challenges to providing wider access to archeological data and information that are considered “sensitive” by some.



*National Atlas of the United States*



*National Atlas of the United States*